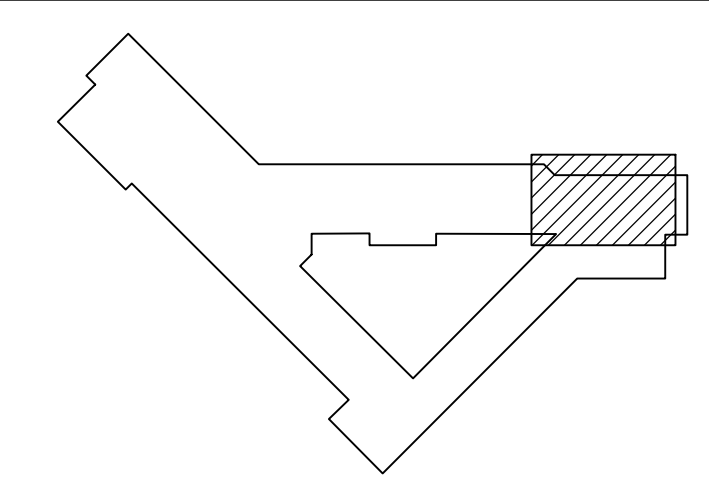


KEY PLAN



NOTES - GENERAL

- THIS DRAWING IS THE COPYRIGHT OF H+A AND MUST NOT BE REPRODUCED, COPIED OR USED WITHOUT THE BELOW CONSULTANT'S CONSENT.
- DIMENSIONS ARE NOT TO BE SCALED FROM THIS DRAWING. UNLESS NOTED OTHERWISE.
- ANY DISCREPANCIES, EITHER BETWEEN WRITTEN DIMENSIONS AND SITE DIMENSIONS OR WITHIN THESE DRAWINGS SHOULD BE BROUGHT TO THE IMMEDIATE ATTENTION OF THE ARCHITECT BEFORE EXECUTING THE WORKS.
- THIS DRAWING IS TO BE READ IN CONJUNCTION WITH ALL OTHER DOCUMENTATION FORMING THE CONSTRUCTION CONTRACT.
- ALL EXISTING DIMENSIONS (LEVELS ETC.) INDICATED ON DRAWINGS ARE TO BE VERIFIED ON SITE.
- CONTRACTOR TO SUBMIT COORDINATED SHOP DRAWINGS FOR APPROVAL AS REQUIRED PRIOR TO COMMENCEMENT OF WORKS AT SITE.

KEY LEGENDS

100% DETAILED DESIGN ISSUE				
NO.	DESCRIPTION	DATE	BY	CHK.
1	ISSUED FOR 100% DETAILED DESIGN	24.09.2021	DL	
2	ISSUED FOR 100% DETAILED DESIGN	24.09.2021	DL	
REVISION	DESCRIPTION	DATE	BY	CHK.

OWNER / TENANT:  
RAK HOSPITALITY HOLDING LLC  
7th Floor RAKBANK Head Office  
Jumeira - Ras Al Khaimah UAE  
PO Box 86000  
www.rakhospitalityholding.com

DESIGNER:  
H+A  
Tammem House, Level 16,  
Office 1607, Barsha Heights  
Dubai, UAE  
www.h-a-global



PROJECT NAME  
SHERATON GRAND TBILISI METECHI  
PALACE - MEETINGS BY ATI

DRAWING TITLE  
TYPICAL FLOOR, WALL, CEILING,  
SKIRTING & SPOT DETAILS

DRAWN	CHKD	CHECKED	INR	APPROVED	DL
SCALE	As indicated	DATE	24.09.2021	PROJ. No.	9020

DRAWING No.	REV
I-413	B